

Current Transformers

GIFU 15-01

General Description

Ritz manufactures an extensive line of cast epoxy resin insulated transformers across the voltage range of 5.5 kV to 72.5 kV. This brochure describes outdoor Current Transformers in the 15 kV class with performance ratings which coincide with industry standard product offerings. Ritz, because of product depth, familiarity with international standards and custom design capability is also capable of designing a solution to your specific needs.

Construction

The toroidal core and winding assembly is encapsulated in cycloaliphatic epoxy resin in a single process under vacuum using the pressure gelation method. The resin color is grey. Brown is available by special order. Epoxy resin was chosen because of its excellent tracking resistance, high mechanical strength, ability to withstand ultraviolet radiation and weathering effects and its inflammability.

Primary Terminals

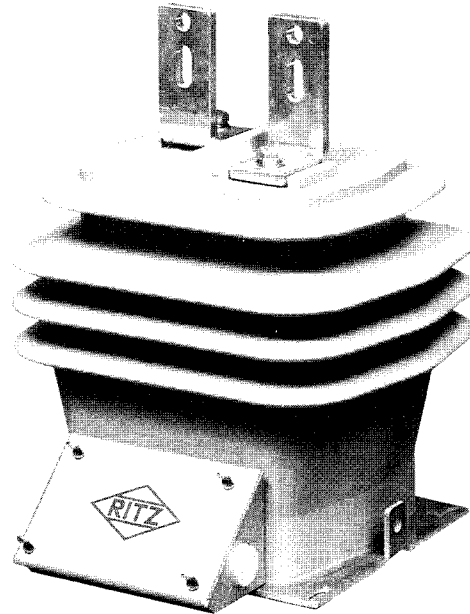
Primary terminals are flat tin plated copper NEMA two hole pads. Primary terminals are detachable so that alternate terminal configurations can be considered.

Secondary Terminals

Secondary terminals are bronze clamp type with a large diameter hole. A bronze pivoting short circuit device is an integral part of the secondary terminal arrangement. A ground terminal is also provided.

Terminal Box

The cast aluminum terminal box has one inch conduit hubs on either end and a knock out for a one inch conduit fitting on the bottom. The box is attached to the transformer body by four bolts in an industry standard pattern and can easily be detached, simplifying change out procedures.



Base Plate

The base is made of marine grade aluminum and is securely attached to the transformer body. Industry standard mounting dimensions and a single hole ground pad 90° to the mounting plate are provided.

Nameplates

Nameplates are of marine grade aluminum with the markings applied by a metal photo process.

Mounting

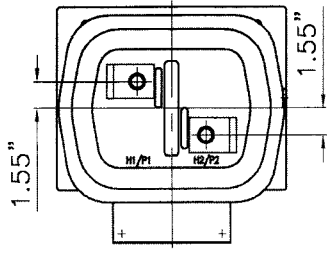
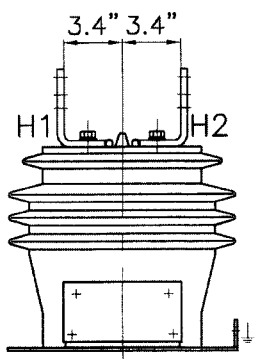
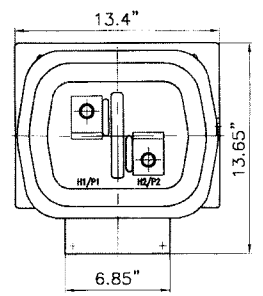
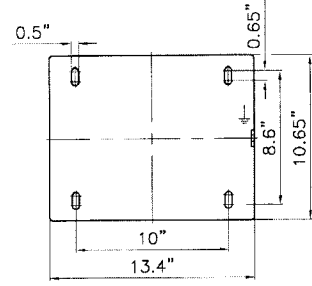
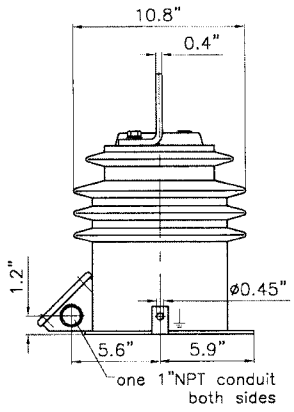
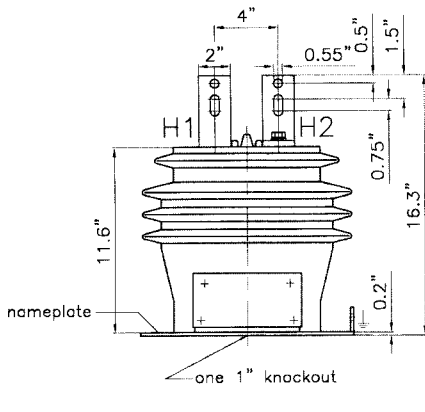
The transformers can be mounted in the upright, vertical or suspended position.

Tests

Routine tests in compliance with IEEE are standard. In addition internal partial discharge is performed as a routine test with acceptance criteria of $< 20 \text{ pC}$ at $1.2 \text{ Vm}/\sqrt{3}$ and $< 50 \text{ pC}$ at 1.2 Vm . Test cards are included with each unit.

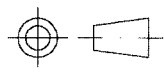
Commissioning and Maintenance

Transformers are supplied ready for service. No special tools are required. Instruction manuals are provided with each shipment. Periodic wiping down of the units with silicone grease is recommended.



Primary Terminals 90° rotated
(scale 1:10)

Maximum System Voltage	15.5 kV
Power Freq. Withstand Volt.	34 kV
Basic Impulse Level	110 kV
Creepage Distance	17.7"
Strike Distance	10"
Weight	95 lbs
Cantilever Strength	1100 lbs
Small deviations in weight and dimensions are possible.	



CURRENT TRANSFORMER TYPE: GIFU 15-01

Current Ratio	Catalogue Number	ANSI Accuracy Class, 60 Hz		Rating Factor
		Meter	Relay	
5:5	111553001 45800	0.3B-1.8	C200	1.5
10:5	111553001 45801	0.3B-1.8	C200	1.5
15:5	111553001 45802	0.3B-1.8	C200	1.5
20:5	111553001 45803	0.3B-1.8	C200	1.5
25:5	111553001 45804	0.3B-1.8	C200	1.5
30:5	111553001 45805	0.3B-1.8	C200	1.5
40:5	111553001 45806	0.3B-1.8	C200	1.5
50:5	111553001 45807	0.3B-1.8	C200	1.5
75:5	111553001 45808	0.3B-1.8	C200	1.5
100:5	111553001 45809	0.3B-1.8	C200	1.5
150:5	111553001 45810	0.3B-1.8	C200	1.5
200:5	111553001 45811	0.3B-1.8	C200	1.5
300:5	111553001 45812	0.3B-1.8	C200	1.5
400:5	111553001 45813	0.3B-1.8	C200	1.5
600:5	111553001 45814	0.3B-1.8	C200	1.5
800:5	111553001 45815	0.3B-1.8	C200	1.5
1000:5	111553001 45816	0.3B-1.8	C200	1.5
1200:5	111553001 45817	0.3B-1.8	C200	1.5
5/10:5	111553001 45820	0.3B-1.8 FULL B-0.9 TAP	C200 FULL C90TAP	1.5 FULL 2.0 TAP
10/20:5	111553001 45821	0.3B-1.8 FULL B-0.9 TAP	C200 FULL C90TAP	1.5 FULL 2.0 TAP
20/40:5	111553001 45822	0.3B-1.8 FULL B-0.9 TAP	C200 FULL C90TAP	1.5 FULL 2.0 TAP
25/50:5	111553001 45823	0.3B-1.8 FULL B-0.9 TAP	C200 FULL C90TAP	1.5 FULL 2.0 TAP
50/100:5	111553001 45824	0.3B-1.8 FULL B-0.9 TAP	C200 FULL C90TAP	1.5 FULL 2.0 TAP
75/150:5	111553001 45825	0.3B-1.8 FULL B-0.9 TAP	C200 FULL C90TAP	1.5 FULL 2.0 TAP
100/200:5	111553001 45826	0.3B-1.8 FULL B-0.9 TAP	C200 FULL C90TAP	1.5 FULL 2.0 TAP
150/300:5	111553001 45827	0.3B-1.8 FULL B-0.9 TAP	C200 FULL C90TAP	1.5 FULL 2.0 TAP
200/400:5	111553001 45828	0.3B-1.8 FULL B-0.9 TAP	C200 FULL C90TAP	1.5 FULL 2.0 TAP
300/600:5	111553001 45829	0.3B-1.8 FULL B-0.9 TAP	C200 FULL C90TAP	1.5 FULL 2.0 TAP
400/800:5	111553001 45830	0.3B-1.8 FULL B-0.9 TAP	C200 FULL C90TAP	1.5 FULL 2.0 TAP
600/1200:5	111553001 49303	0.3B-1.8 FULL B-0.9 TAP	C200 FULL C90TAP	1.5 FULL 2.0 TAP

One Ritz Avenue • Waynesboro, GA 30830
 (706) 554-8800 FAX (706) 554-8808
 www.ritzusa.com