

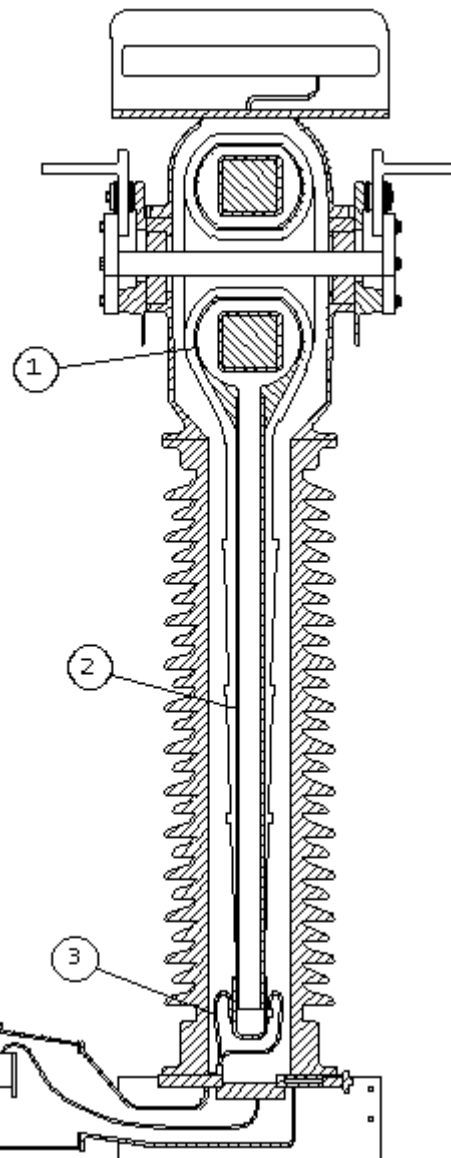
---

## Current Transformer Type OSKF Fault Current Ground Connection

---

Product Bulletin HV-12-PB004r3

To prevent a fault-arc from occurring within the porcelain following an insulation break-through within the head region of the C.T. (e.g. due to lightning), a fault current path to the ground is provided via the core housing (1), the metal tube protecting the secondary leads (2), and its connection to the base frame (3). The risk of the development of a secondary arc within the insulator region, causing the violent destruction of the porcelain, is thereby greatly reduced.



kV	Maximum Internal Fault Current KA, 1 sec
72.5 . . . 145	40
170 . . . 300	63
362 . . . 800	80

## AREVA T&D

---

Areva Waynesboro  
 One Ritz Avenue  
 Waynesboro, Ga. 30830  
 Tel.: (706) 554-8800  
 Fax: (706) 554-8808  
[usitrinfo@areva-td.com](mailto:usitrinfo@areva-td.com)  
[itr-us.areva-td.com](http://itr-us.areva-td.com)

---