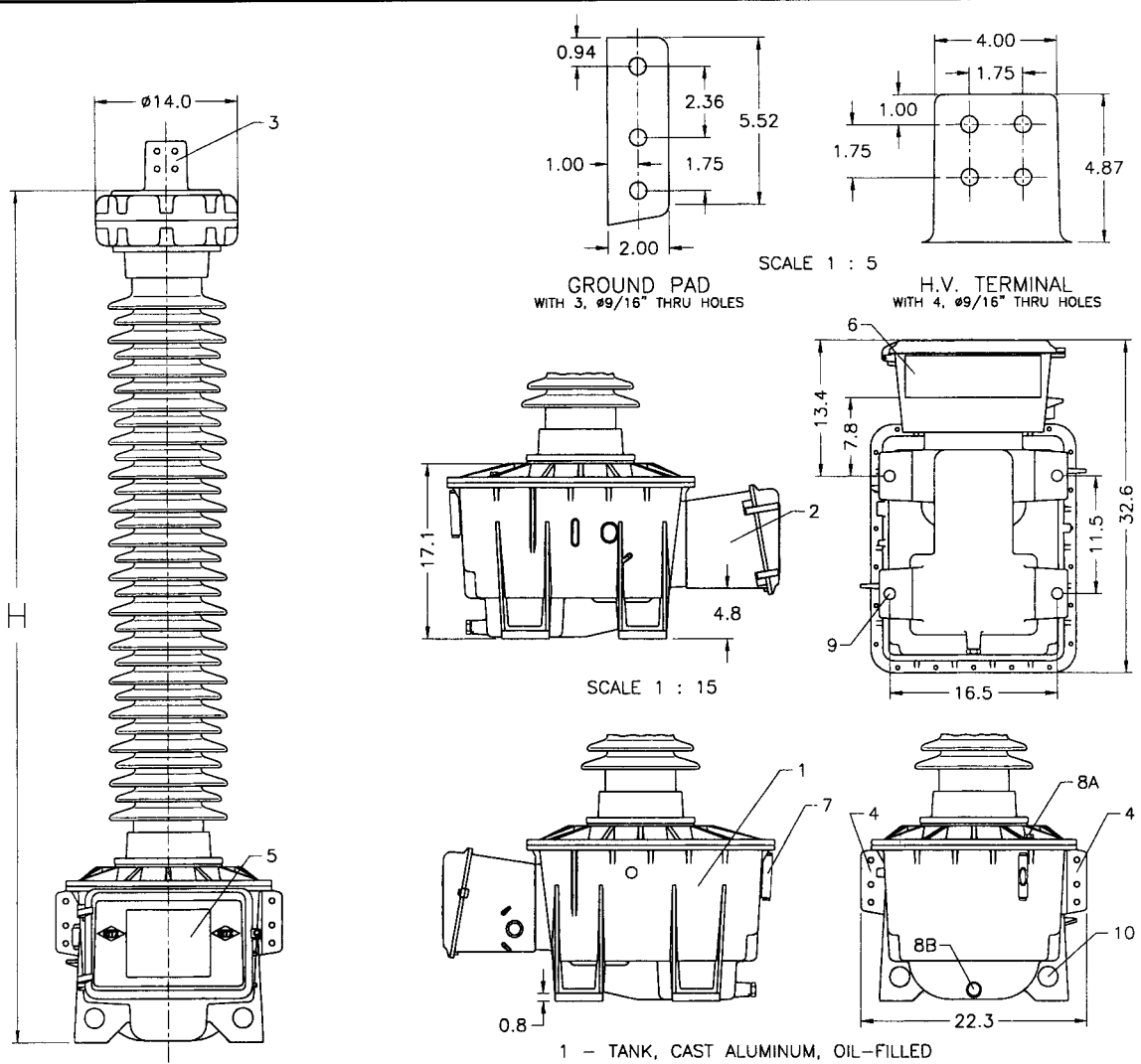


# COUPLING CAPACITOR VOLTAGE TRANSFORMER TYPE OTCF-IM (ANSI STANDARD)

Ritz CCVT's are designed to comply with the requirements of the American National Standards Institute ANSI C93.1 and C93.2. Special designs are available to comply with other standards and special requirements. Ritz CCVT's of these designs are available in voltage ratings from 36.2 kV to 550 kV. Feature common to all voltage ratings are as follows:

CHARACTERISTICS	TYPE OTCF-IM
<b>1. ACCURACY CLASS ANSI</b>	
Each Main Winding	0.3MWXYZ,ZZ
Auxiliary Winding	1.2MWXY
Two main windings are supplied as standard, with a third auxiliary winding available as an option.	
<b>2. TRANSIENT RESPONSE</b>	
Residual Voltage (1 cycle)	9% @ ZZT or 6.5% @ ZT
<b>3. FERRORESONANCE SUPPRESSION</b> - Less than 10% of peak within 10 cycles at 110% of maximum rated voltage.	
<b>4. THERMAL BURDEN RATING</b>	1200 VA
<b>5. SECONDARY SHORT CIRCUIT CURRENT</b>	
Tap Winding	50 A
Full Winding	30 A
<b>6. INTERMEDIATE VOLTAGE</b>	13 kV
<b>7. SHORT TIME OVERVOLTAGE</b> - 140% of performance reference voltage for one minute.	
<b>8. INSULATION CLASS A</b>	
Capacitor Unit - solid dielectric:	Film/Kraft paper
-liquid dielectric:	SAS synthetic oil
Electromagnetic Unit - solid dielectric:	Kraft paper
- liquid dielectric:	Mineral oil



SCALE 1 : 15

SCALE 1 : 5

SCALE 1 : 15

GROUND PAD WITH 3,  $\phi 9/16$ " THRU HOLES

H.V. TERMINAL WITH 4,  $\phi 9/16$ " THRU HOLES

- 1 - TANK, CAST ALUMINUM, OIL-FILLED
- 2 - SECONDARY BOX, ALUMINUM
- 3 - H.V. TERMINAL, ALUMINUM, 1/2" THICK
- 4 - GROUND TERMINALS, 3/8" THICK, DIAGONALLY OPPOSITE
- 5 - MASTER NAMEPLATE, STAINLESS STEEL
- 6 - GLAND PLATE, ALUMINUM, 12.59" X 3.34", 1/8" THICK
- 7 - OIL LEVEL SIGHT GLASS
- 8 - A: OIL FILL PLUG; B: OIL DRAIN PLUG
- 9 - (4)  $\phi 1.10$ " MOUNTING HOLES
- 10 - (4)  $\phi 2.00$ " LIFTING EYES

PARAMETER	UNIT	OTCF-IM TYPE CVT								
		36.2	72.5	123	145	170	245	362	550	
MAXIMUM SYSTEM VOLTAGE $U_m$	kV	36.2	72.5	123	145	170	245	362	550	
NOMINAL SYSTEM VOLTAGE $U_n$	kV	34.5	69	115	138	161	230	345	500	
RATED CAPACITANCE (IM)	pF	32500	17500	10000	8300	6700	5000	3350	2250	
BIL (1.2 X 50 $\mu$ SEC)	kV	200	350	550	650	750	1050	1550	1800	
CREEPAGE DISTANCE (MIN.)	in	42.9	63.7	115.9	139.2	170.7	231.9	341.3	512.0	
STRIKE DISTANCE (MIN.)	in	17.1	22.8	37.2	45.4	54.4	74.4	108.9	163.4	
NO. OF CAPACITOR UNITS	pcs	1	1	1	1	1	2	2	3	
MAXIMUM CANTILEVER LOAD	in*lb	54000	54000	54000	54000	54000	54000	54000	54000	
HEIGHT (H)	in	46.3	52.0	66.4	74.6	83.6	114.8	149.4	215.1	
WEIGHT	lb	515	575	668	677	712	906	981	1248	

D:\COM\OUTLINE\BROC-INCL\ANS

One Ritz Avenue • Waynesboro, GA 30830  
 (706) 554-8800 • FAX (706) 554-8808  
 www.ritzusa.com

Sales Representative

