



OTCF

Coupling Capacitor Voltage Transformers 72.5 kV to 765 kV

In high and extra high voltage transmission systems, capacitor voltage transformers (CVTs) are used to provide potential outputs to metering instruments and protective relays.

In addition, when equipped with carrier accessories, CVTs can be used for power line carrier (PLC) coupling.

DESIGNED FOR LONG SERVICE LIFE

Decades of experience have resulted in strong and reliable units, able to meet the highest standards. These units are manufactured using the most modern insulation impregnation technology and equipment.

AREVA T&D CVT's provide excellent reliability because the major insulation of the CVT, the capacitor stack, comprised of homogeneously assembled capacitor elements, is extremely surge resistant irrespective of the waveform of the surge voltage.

CVT insulation integrity is assured by the fact that a metallic bellows assembly hermetically seals the oil from the atmosphere.

All external parts are made from marine grade aluminum and stainless steel hardware is used, no painting is required.



- > For revenue metering and protection in high voltage networks
- > PLC application
- > Performance:
 - V_m : 36 to 765 kV
 - Accuracy classes from 0.15 % to 1.2 %
- > Characteristics:
 - High quality film / paper-oil insulation
 - Oil expansion by stainless steel bellows
 - Superior transient response
 - Porcelain or composite insulator
- > Seismic withstand capability:
 - The standard OTCF resists medium intensity seismic events. For highly active seismic regions, the design is adapted accordingly.
- > Compliance with ANSI / IEEE, IEC or equivalent standards.

Customer Benefits

- Conservative and safe design
- Extensive field and extreme climate experience, including high seismic regions
- Operation as coupling capacitor for power line carrier
- Rugged, leak-proof design
- Maintenance-free
- Easy transport and installation



Reliable design for high life expectancy

INSULATING SYSTEMS

The external insulation is provided by the porcelain housing and coordinated with the capacitor stack, consisting of virtually identical elements so that the axial voltage distribution from the line terminal to ground is essentially uniform.

The capacitor elements have a mixed dielectric material consisting of alternating layers of polypropylene film and kraft paper. The kraft paper layers serve as a wicking agent to ensure homogenous synthetic oil impregnation and stabilize capacitance over a wide temperature range.

The electromagnetic unit (EMU) is housed in an oil-filled tank at the base of the capacitor stack. Mineral oil is employed as the insulating medium instead of air because of its superior insulating and heat transfer properties. The use of an oil-filled base tank removes the need for space heaters in the secondary terminal box as this area is warmed by heat transfer from the insulating oil. This results in a more reliable, compact and cost effective design.

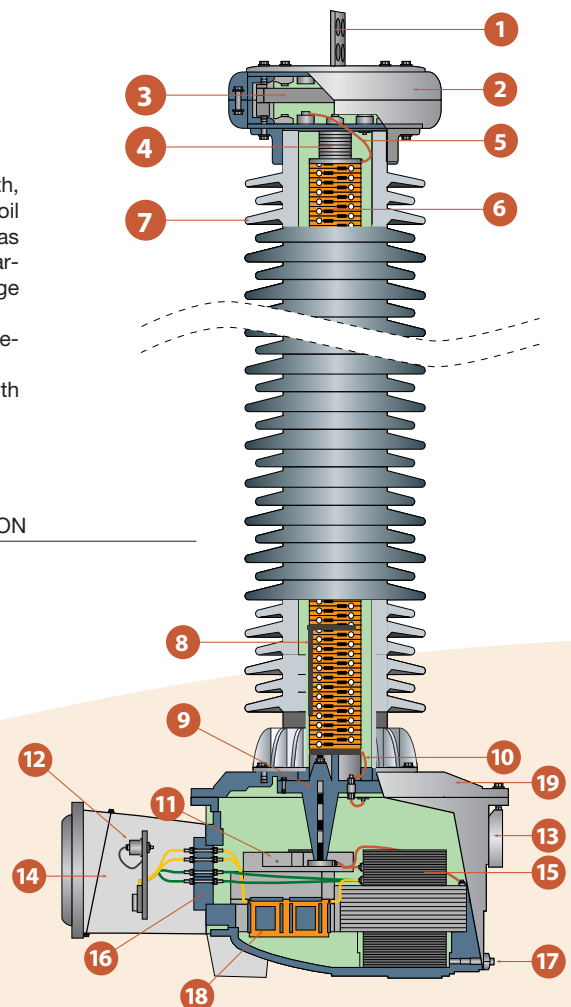
INSULATING OIL

We use insulating oils with excellent dielectric strength, aging, and gas absorbing properties. The synthetic oil used for the capacitor units possesses superior gas absorption properties resulting in exceptionally low partial discharge with high inception/extinction voltage ratings.

The oil used for the EMU is premium naphthenic mineral oil.

The oil is filtered, vacuum dried and degassed with in-house processing. It contains no PCB.

- 1 - Primary terminal
- 2 - Cast aluminum bellow housing
- 3 - Stainless steel expansion bellow
- 4 - Compression spring
- 5 - Insulated voltage connection
- 6 - Capacitor elements
- 7 - Insulator (porcelain or composite)
- 8 - Voltage divider tap connection
- 9 - Cast-epoxy bushing
- 10 - HF terminal connection
- 11 - Ferro-resonance suppression device
- 12 - Secondary terminals
- 13 - Oil level sight-glass
- 14 - Aluminum terminal box
- 15 - Intermediate transformer
- 16 - Oil/air block
- 17 - Oil drain plug
- 18 - Compensating reactor
- 19 - Aluminum cover plate



TYPICAL SECTION

CAPACITOR STACK

The capacitor stack is a voltage divider which provides a reduced voltage at the intermediate voltage bushing for a given voltage applied at the primary terminal.

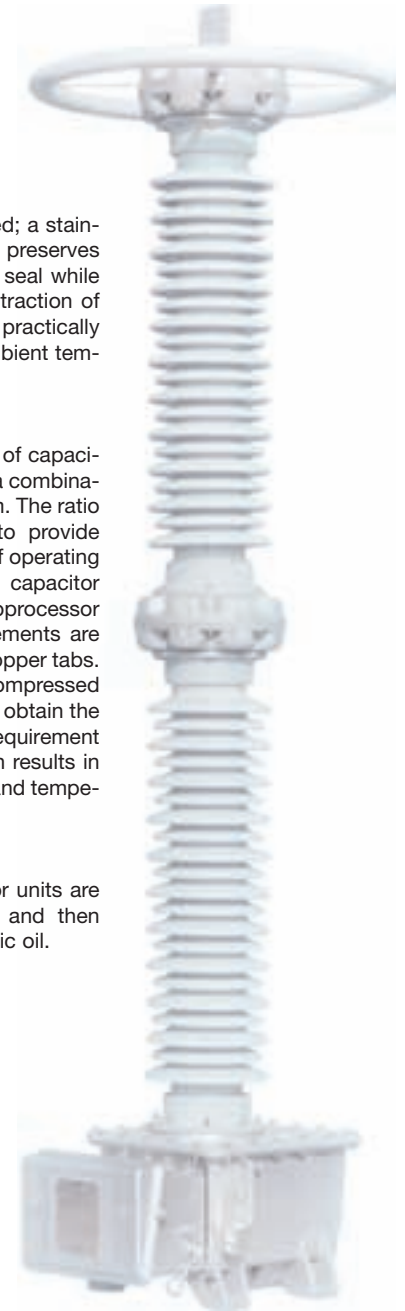
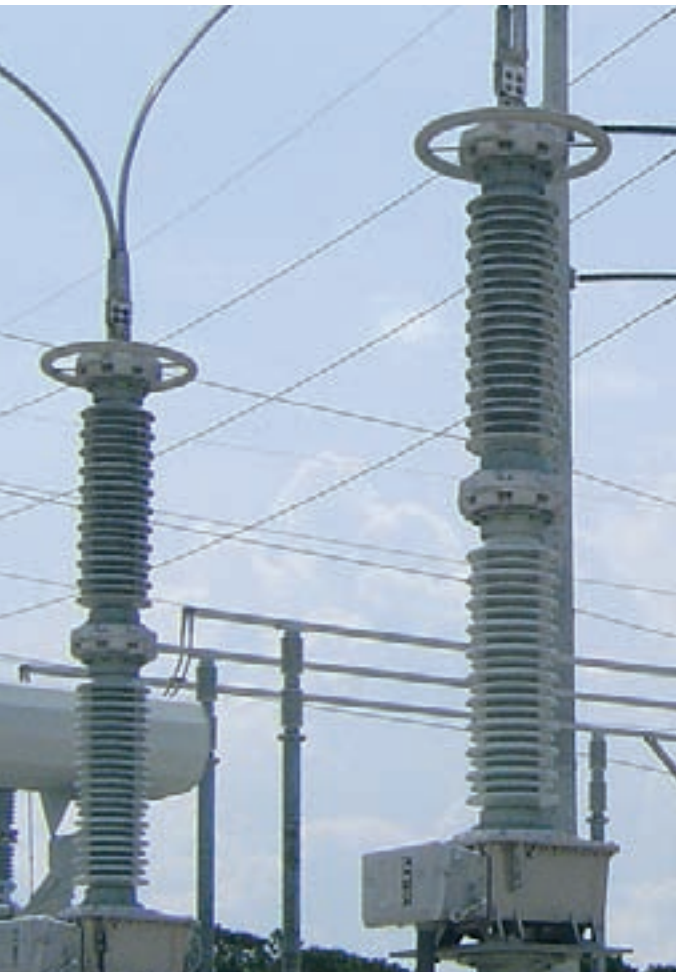
The capacitor stack is a multi-capacitor-unit assembly. Each unit is housed in an individual insulator. A cast aluminum cover is on top of the upper capacitor assembly and is fitted with an aluminum terminal. An adapter for mounting a line trap on top of the CVT can be provided with an optional (and removable) HV terminal.

The capacitor units are mechanically coupled together by means of stainless steel hardware passing through the corrosion resistant cast aluminum bellows housing. The mechanical connection also establishes the electrical connection between capacitor units. This facilitates field assembly of the CVT.

Each capacitor unit is hermetically sealed; a stainless steel diaphragm (expansion bellows) preserves oil integrity by maintaining the hermetic seal while allowing for thermal expansion and contraction of the oil. The capacitor units operate in a practically pressure-free mode over a very wide ambient temperature range.

The capacitor stack consists of a series of capacitor elements. The dielectric spacers are a combination of kraft paper and polypropylene film. The ratio of paper/film is carefully determined to provide constant capacitance for a wide range of operating temperature. The aluminum electrodes capacitor elements are precision wound by microprocessor controlled machinery. The capacitor elements are connected with low inductance tinned copper tabs. The stack assemblies are hydraulically compressed and bound with epoxy fiberglass tape to obtain the optimum space factor for capacitance requirement and oil circulation. This capacitor design results in stable accuracy performance over time and temperature.

After assembly in the insulator, capacitor units are individually oven dried under vacuum and then impregnated with the processed synthetic oil.



**Thousands
of installed units
attest to their reliability**

ELECTROMAGNETIC UNIT (EMU)

The EMU steps down the intermediate voltage provided by the voltage divider to values suitable for relay and metering applications.

A compensating reactor cancels the phase shift introduced by the capacitor voltage divider. A set of internal taps is used for factory accuracy and phase angle adjustments to provide optimum performance. Over-voltage protection is provided by a protective gap connected in parallel to the series reactances.

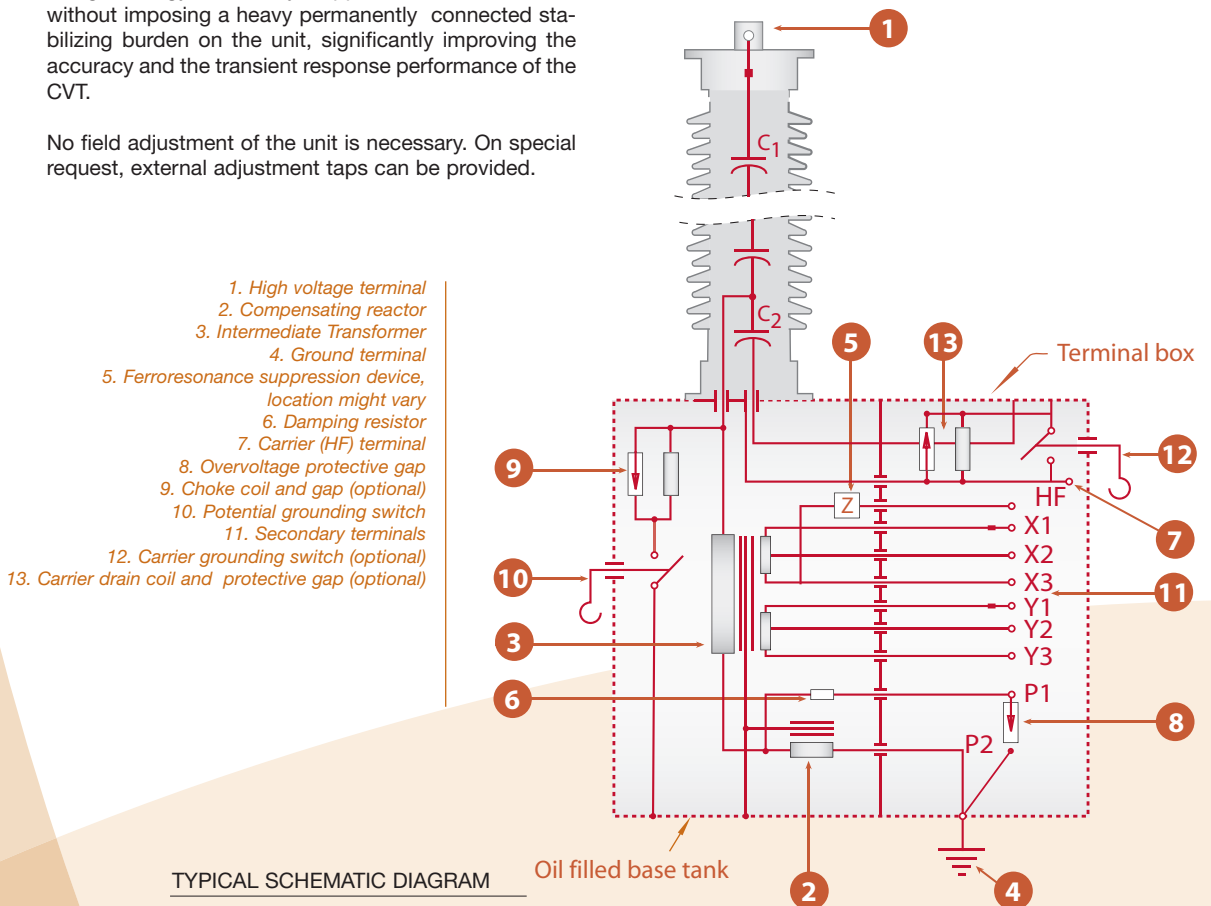
The inherent capacitance of the divider and the inductances in the EMU of a CVT require the suppression of ferro-resonance.

The ferro-resonance suppression device (FSD) contains a saturable reactor, which acts like a switch. It presents a very high impedance under normal conditions and switches on a damping resistor across the secondary at a prescribed level. When the voltage has normalized it switches off the damping load. The voltage sensitive switching strategy effectively suppresses ferroresonance without imposing a heavy permanently connected stabilizing burden on the unit, significantly improving the accuracy and the transient response performance of the CVT.

No field adjustment of the unit is necessary. On special request, external adjustment taps can be provided.

The EMU is housed in a cast aluminum base tank with a cast aluminum cover. Ground pads are located on both sides of the tank to provide flexibility for connections. These pads can accommodate either NEMA/IEC 2 hole or customer specified grounding connection. The base tank is filled with treated mineral oil and hermetically sealed from the environment and from the synthetic oil in the capacitor units. A sight glass at the rear of the tank provides for easy oil level monitoring. No oil maintenance is necessary throughout the service life of the unit. An oil drain plug is provided on the base tank.

External potential grounding switches (PGS) are installed on all ANSI / IEEE units for safety purposes. A ground shield is provided between the intermediate voltage winding and the secondary windings, in the event of insulation failure, the voltage on the secondary circuits is reduced. It also protects the secondary from voltage transients. PGS and CGS ice shields available as option.



TYPICAL SCHEMATIC DIAGRAM



CARRIER ACCESSORIES

When the CVT is equipped with carrier accessories for PLC service, an external carrier grounding switch (CGS) and carrier entrance bushing are provided in the terminal box. The carrier accessories include a carrier drain coil with protective spark gap. A choke coil and a protective spark gap are installed in the base tank when a potential ground switch (PGS) is provided to prevent the loss of the carrier signal when the PGS is in the closed position.

SECONDARY TERMINAL BOX

The terminal box is spacious and can accommodate all required connections. The secondaries of the EMU are brought out of the base tank through an oil/air seal block assembly and terminated on separate terminal blocks with 8-32 screws. Other terminals on request. The secondary terminal box area is warmed by heat transfer from the oil filled tank. This prevents condensation in the terminal box and removes the need for a space heater in service. An aluminum gland plate is provided to accommodate customer conduit hubs. The door can be made lockable on request. An interlock with the PGS can be provided on request.

- > **Dielectric loss factor:**
 - Less than 0.06 % / 0.0006 at rated voltage

- > **Radio Influence Voltage (RIV):**
 - Less than 2500 μV at 1.1 U_m

- > **Partial discharge:**
 - Less than 10 pC at U_m

- > **Frequency:**
 - 50 Hz or 60 Hz.

- > **Ambient temperature:**
 - -50°C ... $+45^\circ\text{C}$ on a 24h average.

Other values on request.

CORONA SUPPRESSION

Corona suppression is considered in the design and construction of every part of the CVT. 245 kV units and units above 245 kV are supplied with an aluminum corona ring to ensure insulation performance.

SECONDARY WINDINGS

To meet the requirements for measuring and protection, generally two secondary windings are provided with an option of up to four windings, including the ground fault winding. The maximum burdens can be seen on page 7.



INSULATOR

The outer insulation consists of a high-quality porcelain in grey (ANSI 70) or brown (RAL 8016). High creepage distances are available as standard according to the dimension tables. Extra high creepage distances are available on request.

On special request, AREVA T&D can offer CVTs with a composite insulator consisting of an epoxy resin fiberglass tube with silicone rubber sheds.

AMBIENT CONDITIONS

All OTCF are designed to operate in ambient temperature from -50°C to $+45^{\circ}\text{C}$, withstand wind speeds of 100 mph, site location up to 3300 ft and 0,3 g lateral force. AREVA can design to meet unusual site conditions when specified.

SERVICE LIFE AND MAINTENANCE

OTCF have been designed for a 30 years plus lifetime. They have near-zero maintenance requirements: the oil is hermetically sealed from the air by a stainless steel diaphragm assembly and all external parts are of corrosion-resistant material.

TESTS

Routine tests are performed in accordance with national, international and internal quality standards. Each capacitor unit is routine tested for lightning impulse, power-frequency withstand, partial discharge, dissipation factor and capacitance. A routine test report is provided for each unit. Existing type test reports can be provided on request.

Partial discharges

For the capacitor units, the partial discharge intensity is less than 5 pC at $1.2 U_m/\sqrt{3}$ and less than 10 pC at U_m after the power frequency voltage test.

Ferro-resonance check

After routine accuracy tests, the unit is checked for ferro-resonance suppression by applying secondary short-circuits. The secondary voltage is monitored with an oscilloscope to ensure that the recovery of normal waveform is satisfactory.

Dissipation factor or $\tan \delta$

Dissipation factor measured at the rated voltage is less than 0.06 %.

INQUIRY CHECK LIST

- | | |
|--|---|
| > Applicable standards | > Thermal burden |
| > Rated frequency | > Environmental conditions (altitude, temperature, site pollution, seismic conditions, ...) |
| > Highest system voltage | > Required creepage distance in mm or in mm/kV |
| > Power-frequency withstand test voltage | > Options as required: |
| > Lightning impulse test voltage | > HV terminal (material and dimensions) |
| > Switching impulse test voltage, if applicable | > Carrier accessories |
| > Rated capacitance C_n in pF | > Composite insulator (light grey). |
| > Overvoltage factor (ex. 1,5 U_n 30 s) | > Suspension mounting |
| > Voltage ratio | > Secondary terminal box heater |
| > Number of secondaries | > HV and ground connectors |
| > Accuracy class and rated burden for each secondary winding | > Line trap adapter |
| > Transient response | |

If a line trap is to be mounted on the CVT, please specify the weight and overall dimensions and load conditions.



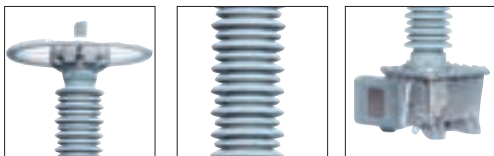
EASY TRANSPORT AND INSTALLATION

CVTs must be transported and stored in the upright position. Multi capacitor unit assemblies are delivered with the upper capacitor units packed in the same crate.

The base unit and upper stack elements can easily be assembled by following the instruction manual. No special tools are required.

DESIGNATION

OTCF ... SR	Standard High Capacitance Relay Accuracy
OTCF ... SI	Standard High Capacitance Intermediate Accuracy
OTCF ... SM	Standard High Capacitance Meter Accuracy
OTCF ... IR	Intermediate High Capacitance Relay Accuracy
OTCF ... II	Intermediate High Capacitance Intermediate Accuracy
OTCF ... IM	Intermediate High Capacitance Meter Accuracy
OTCF ...ER	Extra High Capacitance Relay Accuracy
OTCF ...EM	Extra High Capacitance Meter Accuracy



RATINGS

Capacitive voltage transformers can be rated for metering and/or protection purposes. Accuracy 0.15 on request.

The following burdens (as a sum of all windings except the ground fault winding) can be achieved.

TYPE OTCF	SR ER	IR SI	II	SM	IM	EM
Rated burden according to IEEE						
60 Hz	1,2 Z	0,6 Z	0,6 ZZ	0,3 Z	0,3 ZZ	0,3 ZZ
Thermal burden (VA)						
60 Hz	1000	1000	1000	1000	1000	1500
Transient response						
Residual voltage (1 cycle)	9%@ZT 6%@ZT	8%@ZT 9%@ZT	9%@ZT	9%@ZT	9%@ZZT or 6,5@ZT	5%@ZZT

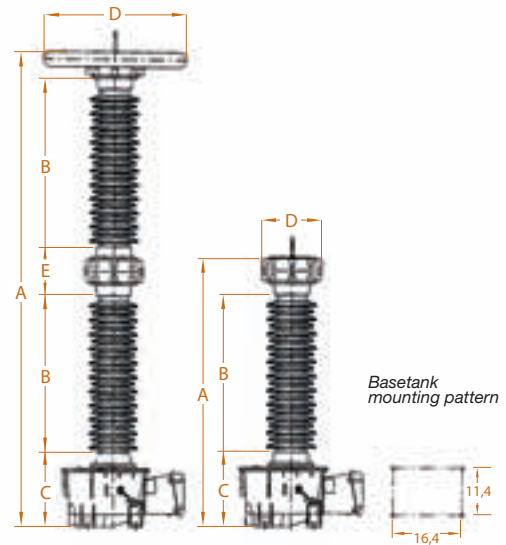
The following capacitances are standard for the various voltage levels :

Type (Vm [kV])	...SR ...SM	...IM ...II ...IR	...ER ...EM
Capacitance (pF)*			
OTCF 72,5	12500	17500	37500
OTCF 123	7500	10000	22500
OTCF 145	6250	8300	18800
OTCF 170	5250	6700	16200
OTCF 245	3750	5000	11250
OTCF 362	2650	3350	8100
OTCF 550	1750	2250	5400
OTCF 765			4000

*other values on request

DIMENSIONS

The following dimensions refer to standard versions.
Other requirements affect dimensions and weights.



DIMENSIONS										
Maximum system voltage (V _m)	kV	72.5	123	145	170	245	362	550	765	
Impulse test voltage (BIL)	kV	350	550	650	750	1050	1300	1800	2100	
OTCF	Creepage distance	in	63.7	115.9	139.1	170.6	231.8	341.3	512.0	-
... SR	Dimensions in	A	50.5	64.9	73.1	82.2	113.4	147.9	213.7	-
... SI		B	22.8	37.2	45.3	54.4	37.2	54.4	53.2	-
... II		C	19	19	19	19	19	19	19	-
... IR		D	14	14	14	14	25.5	34	34	-
		E	-	-	-	-	11.2	11.2	2x11.2	-
	Total weight (approx.)	pound	407.8	496	504.8	542.3	736.3	811.3	1.078.0	-
	Weight of oil (approx.)	gal	7.9	8.1	8.7	8.9	10.5	11.8	15	-
OTCF	Creepage distance	in	63.7	115.9	139.1	170.6	231.8	223.2	512	-
... IM	Dimensions in	A	52	66.3	74.5	83.6	114.8	149.3	215.1	-
... SM		B	22.8	37.2	45.3	54.4	37.2	54.4	54.4	-
		C	20.5	20.5	20.5	20.5	20.5	20.5	20.5	-
		D	14	14	14	14	25.5	34	34	-
		E	-	-	-	-	11.2	11.2	2x11.2	-
	Total weight (approx.)	pound	575.4	668	676.8	712.0	906	981	1247.8	-
	Weight of oil (approx.)	gal	11.8	12.9	13.2	13.4	15	16.3	19.5	-
OTCF	Creepage distance	in	62.9	109.2	134.6	172.0	216.9	344	516.1	688.1
... ER	Dimensions in	A	51.8	66.2	74.2	84.7	116.3	153.3	221.8	290.4
		B	22.8	37.2	45.1	55.7	36.4	55.7	55.7	55.7
		C	20.2	20.2	20.2	20.5	20.2	20.2	20.2	20.2
		D	17.5	17.5	17.5	17.5	25.5	34	34	40
		E	-	-	-	-	12.8	12.8	2x12.8	3x12.8
	Total weight (approx.)	pound	524.7	610.6	709.8	826.7	970.0	1384.5	1935.6	2491.2
	Weight of oil (approx.)	gal	10	11.6	12.6	14	17.4	22.1	30.1	38.3
OTCF	Creepage distance	in	62.9	108.4	134.6	172	216.9	344	516.1	688.1
... EM	Dimensions in	A	53.3	67.6	75.6	86.1	117.7	154.7	223.3	291.8
		B	22.8	37.2	45.1	55.7	37.2	55.7	55.7	55.7
		C	21.6	21.6	21.6	21.6	21.6	21.6	21.6	21.6
		D	17.5	17.5	17.5	17.5	34	34	34	40
		E	-	-	-	-	12.8	12.8	2x12.8	3x12.8
	Total weight (approx.)	pound	694.4	780.4	879.6	996.4	1139.7	1554.2	2105.4	2660.9
	Weight of oil (approx.)	gal	14.5	16.1	17.1	18.4	21.9	26.6	34.6	42.7

Indicative value only - All dimensions must be confirmed with order.

AREVA T&D Worldwide Contact Centre:
www.aveva-td.com/contactcentre/
 Tel. : +44 (0) 1785 250 070

www.aveva-td.com

Areva Waynesboro:
 One Ritz Avenue
 Waynesboro, Ga. 30830
 Tel. : (706) 554-8800
 Fax : (706) 554-8808
 usitinfo@aveva-td.com
 itr-us.aveva-td.com